



SMADC is a division of the
TRI-COUNTY COUNCIL
for SOUTHERN MARYLAND

Rebuilding our Region's Food System

A Southern Maryland Case Study

Anybody interested in solving, rather than profiting from, the problems of food production and distribution will see that in the long run the safest food supply is a local food supply, not a supply that is dependent on a global economy.

Wendell Berry

Meat Processing Flow Chart

Livestock Finished on Farm

USDA/FSIA Inspected Abattoir

The Southern Maryland Regional Ag Center
USDA/FSIS Inspected

Farmer's Market or
On-Farm Store

Restaurants

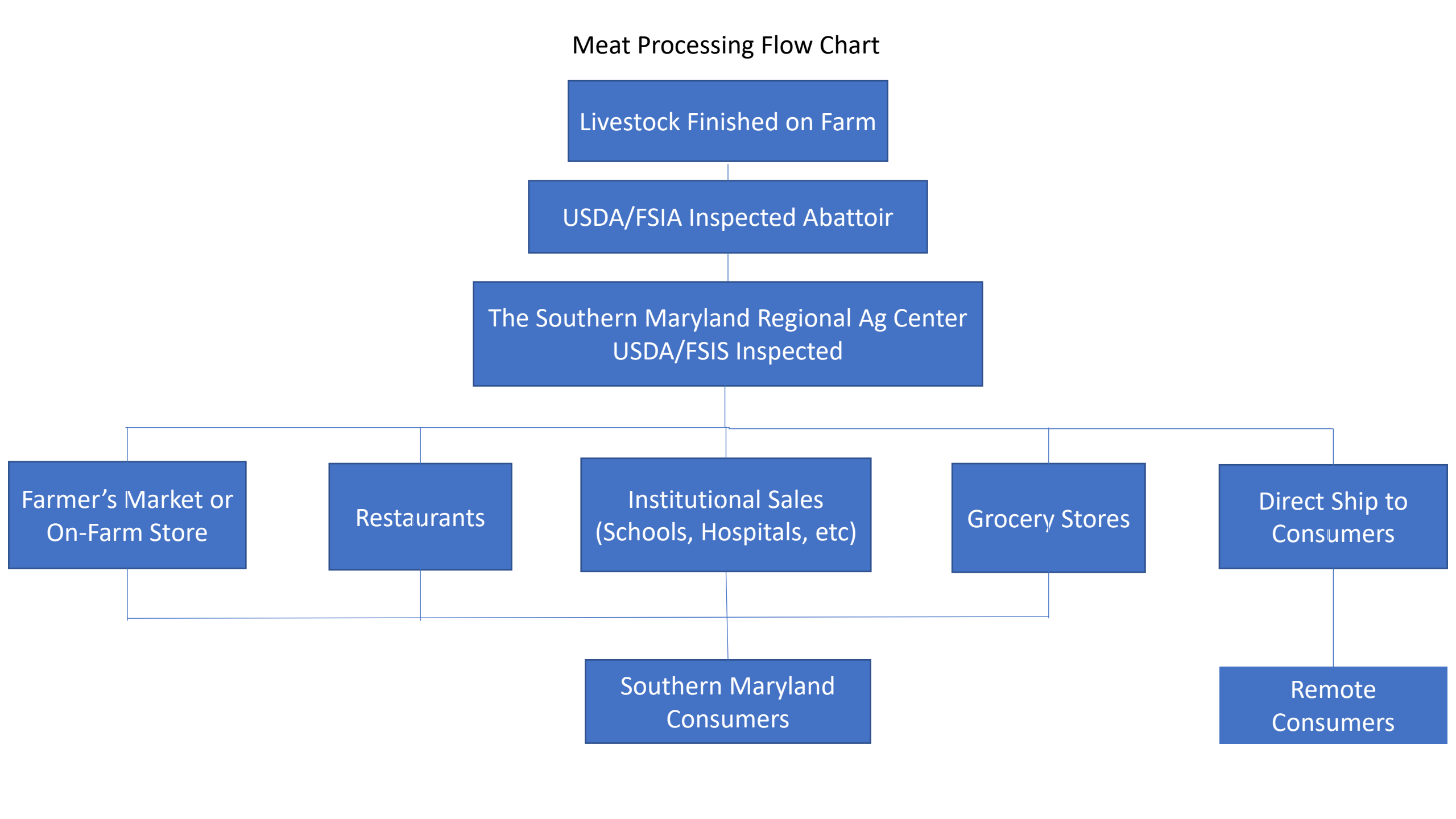
Institutional Sales
(Schools, Hospitals, etc)

Grocery Stores

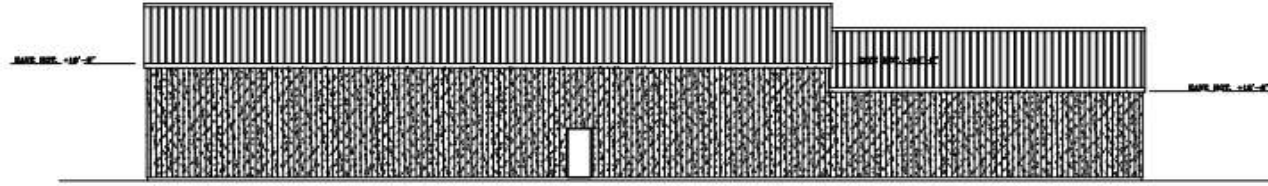
Direct Ship to
Consumers

Southern Maryland
Consumers

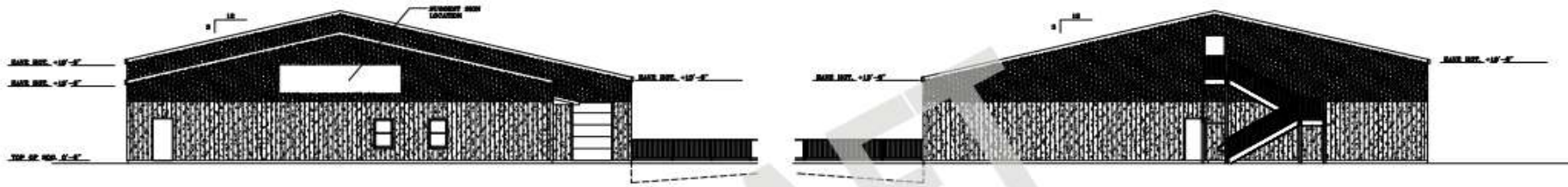
Remote
Consumers



Southern Maryland Regional Agricultural Center (RAC)

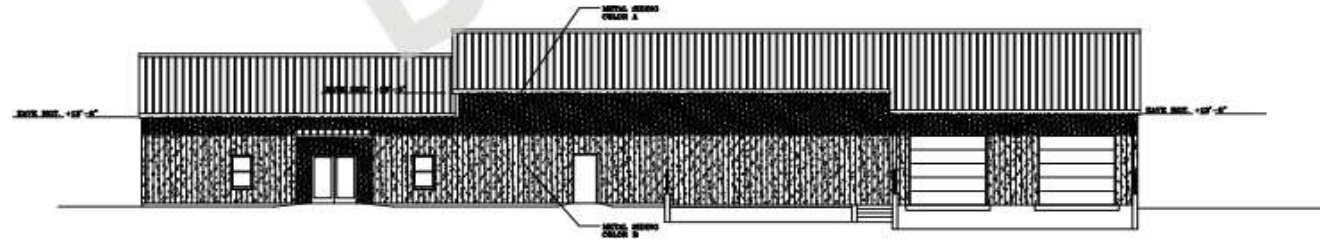


4 REAR ELEVATION
1/8"=1'-0"

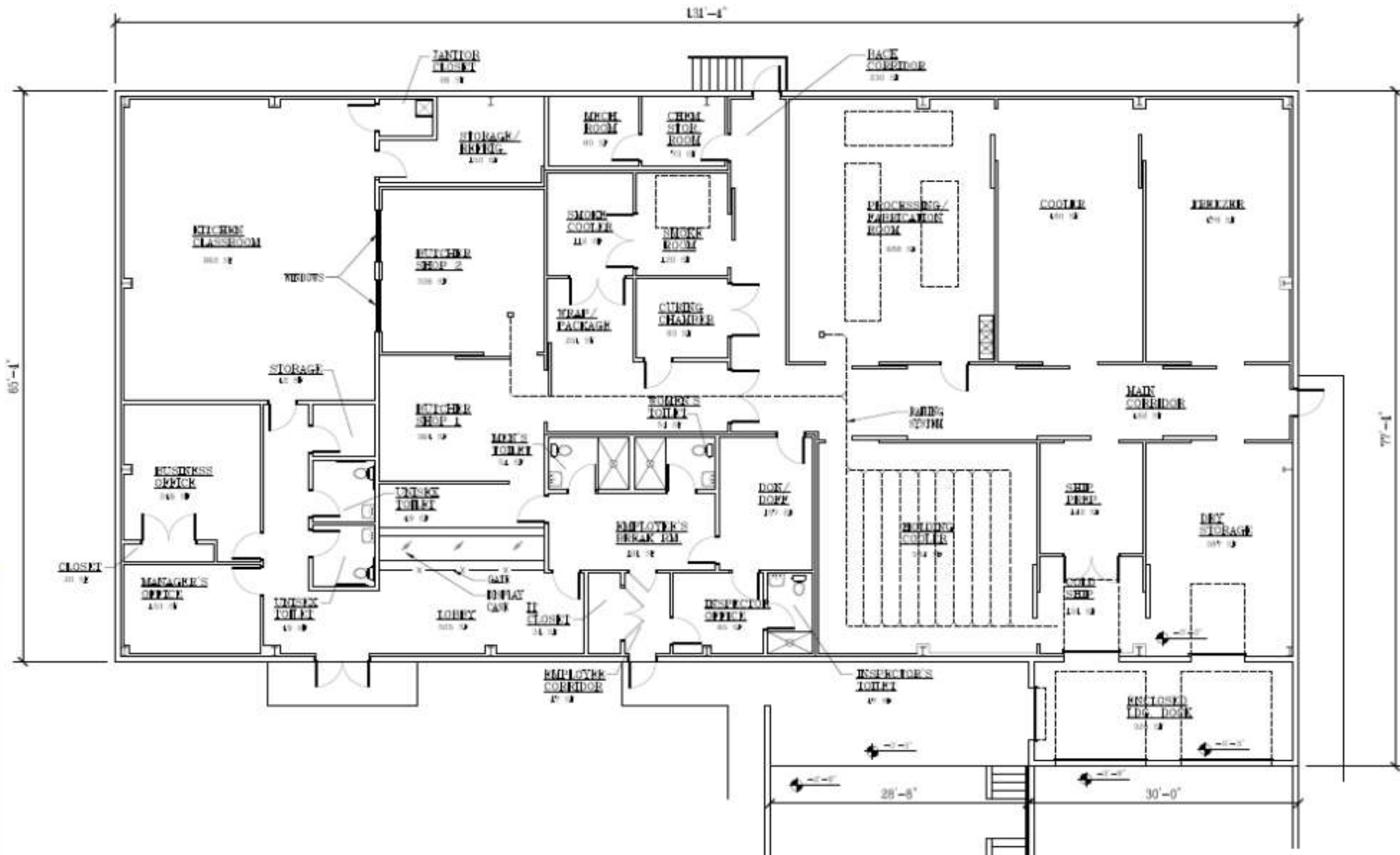


3 LEFT SIDE ELEVATION
1/8"=1'-0"

2 RIGHT SIDE ELEVATION
1/8"=1'-0"



1 FRONT ELEVATION
1/8"=1'-0"



Business Functions at the RAC

- A Regional Butcher Shop/Cut and Wrap Facility
- A Finer Meats Processing Facility
- A Meat Locker and Cold Storage Facility
- A Warehouse and Distribution Site
- A Commercial Kitchen
- An Instructional Kitchen Classroom
- A Retail Store
- Product Storage Facility

Agricultural Development Is Economic Development

- **Local Government** has a vital role in supporting local agriculture and a well-managed food chain for the health and well-being of its people and for the stability of its economy.
- **Family farms**=96% of all United States farms (incomes less than \$350,000). Yet they account for only 19% of agricultural products sold.
- **Locally owned processing** operations have given way to vertically integrated companies that sell products at lower prices across seasons, and in greater quantities leaving many regions without adequate processing opportunities to compete.
- The COVID-19 pandemic and the resulting **supply chain disruptions** revealed the challenges of a national food system and depend on production concentrated in a few geographic areas and requires many steps to get from producer to consumer.
- “**Regional**” and “**Local**” are not the same.



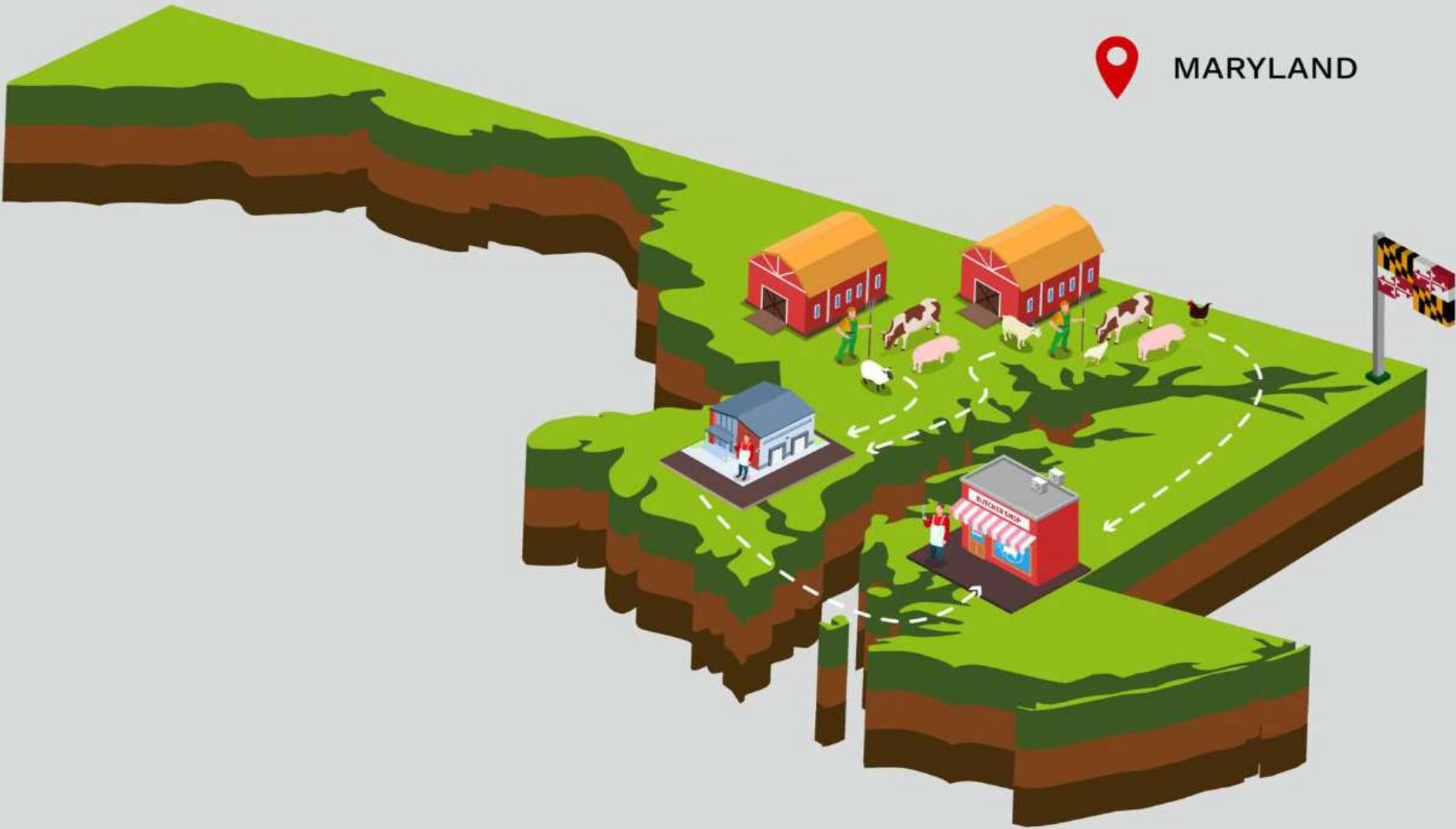
PUBLIC INCUBATOR FOR PRIVATE ENTERPRISES

Agricultural Development Is Economic Development





MARYLAND



PUBLIC INCUBATOR FOR PRIVATE ENTERPRISES

Scroll the slides to learn about the actors in this value chain.

content/uploads/2023/04/POP-UP_SMADC_1.jpg



Search





SOUTHERN MARYLAND AGRICULTURAL DEVELOPMENT COMMISSION



HUGHESVILLE, MD

PROCESSOR, POINT OF SALE



SMADC supports the future of agriculture in Southern Maryland by providing vision, support, grants, marketing, and promotion to area farmers, helping to streamline regulations and reduce obstacles, and connecting local farmers to consumers while preserving farmland.

KEY PERSON



Craig Sewell
Marketing & Livestock Program Manager

Through his initial role in directing the Southern Maryland Meats initiative, a marketing program created to support the region's livestock producers, Craig began to advocate for the funding and construction of SMADC's Regional Agricultural Center (RAC).

SUBSCRIBE





PUBLIC INCUBATOR FOR PRIVATE ENTERPRISES

Agricultural Development Is Economic Development





 ANNE
ARUNDEL
COUNTY
MARYLAND
LOTHIAN GRAIN ELEVATOR
6272 SOUTHERN MOST RD, LOTHIAN, MD 20711

County Executive Stuart Pittman

Operator: Warfield Brothers



LOTHIAN MILLS

EST 2023

Many supply chains are perfectly suited to the needs that the business had 20 years ago.

~Jonathan Byrnes, MIT Professor

The supply chain stuff is really tricky.

~Elon Musk, CEO of Tesla and SpaceX. ..