

SHORE UP!

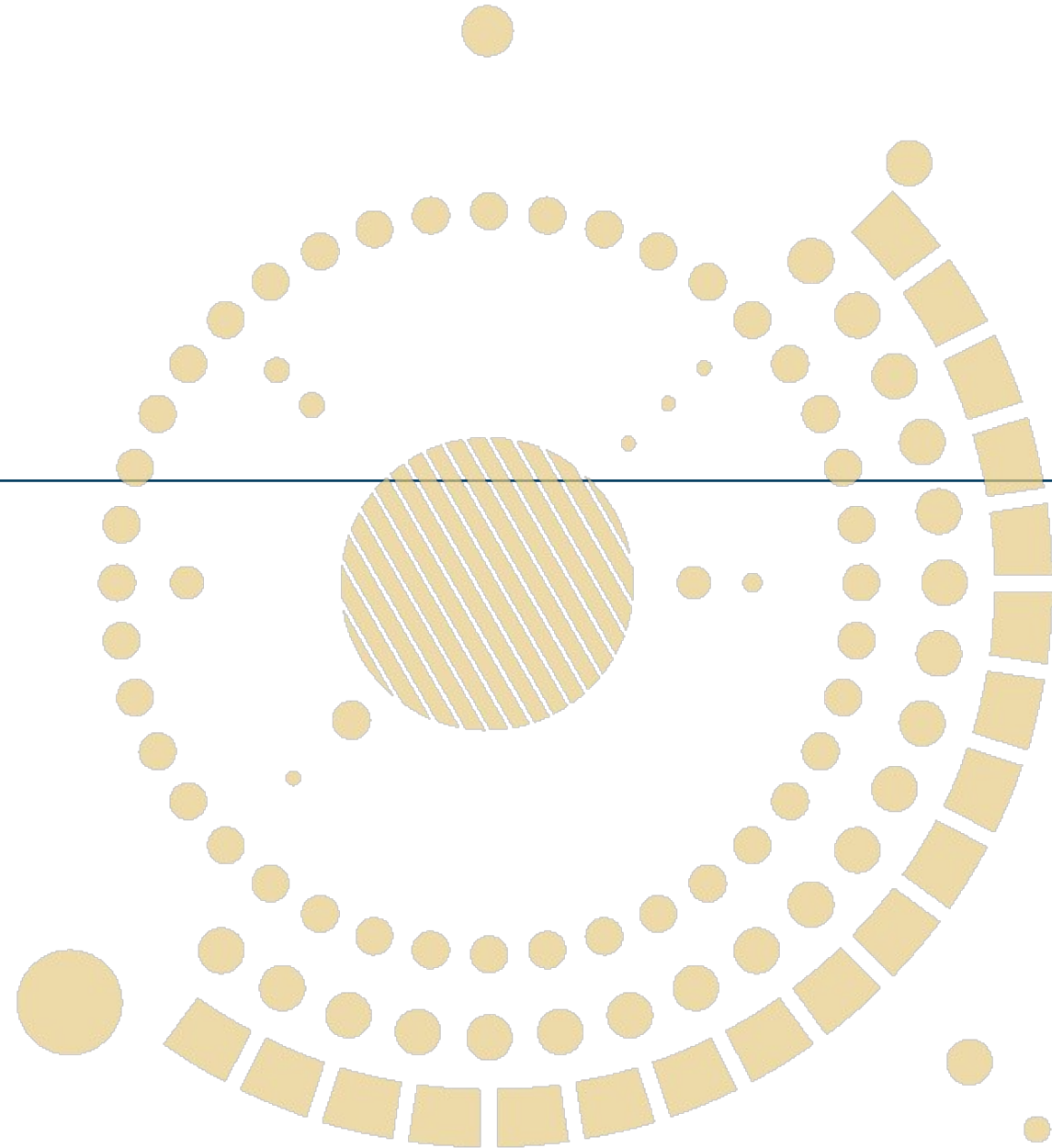
INC.



Helping People. Changing Lives.

RURAL HEALTH TRANSPORTATION

Corey J. Bowen, Ph.D.
Director, Early Head Start & Head Start



Agenda

- ❖ Background
- ❖ Transportation Purpose
- ❖ Who we serve
- ❖ Goals & Partners
- ❖ Additional transportation provided



Agency Background

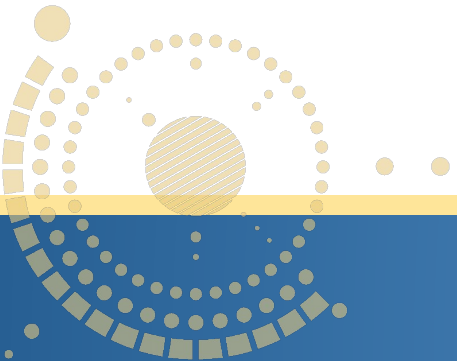


- ❖ SHORE UP! is dedicated to revitalizing communities and empowering individuals and families to maintain long-term independence and achieve economic security.
- ❖ Service area includes: Wicomico, Worcester, Somerset, Dorchester, Kent, Talbot & Queen Anne's counties.
- ❖ SHORE UP! was established in 1965 and serves approximately 15,000 annually.

Transportation Background



- ❖ Through participation in the USDA sponsored CACFP Program, SHORE UP! provides meals to students in Early Head Start & Head Start programs.
- ❖ Clients in Adult Day & Residential Services, Foster Grandparents and classroom staff also receive nutritious meals.
- ❖ Two meal trucks-One truck covers the Lower Shore (Worcester, Wicomico & Somerset Counties). A second truck delivers to the Upper Shore (Dorchester, Talbot and Queen Anne's counties).



Transportation Background



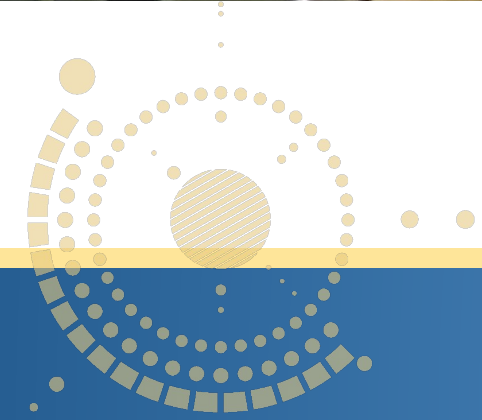
- ❖ Meal trucks operate Mon.-Fri. starting at 7 a.m., delivering meals to 15 sites.
- ❖ Trucks are needed year-round in Early Head Start, Adult Day Services & Residential Services.
- ❖ A new meal truck has been purchased.



Transportation Background



During the 2020 school year, bagged lunches were transported to students in the agency's seven-county service area.



Who we serve....

- ❖ Low-income families who meet federally established income guidelines
- ❖ Ethnically diverse families including: 70% African-American, 9% Caucasian, 14% Hispanic, 7% Asian, Haitian, Sudanese, Ethiopian
- ❖ SHORE UP! serves 572 in Head Start & Early Head Start, 60 in Adult Day & Residential Services, and 50 Foster Grandparents.
- ❖ **Through 9/27/2021-7,998 total meals served**

Transportation Goals

- ❖ Ensure all students in Head Start & Early Head Start, all Foster Grandparents, and all individuals in Adult Day & Residential Services receive nutritious meals.
- ❖ Improve learning skills
- ❖ Create a full-time job opportunity

Partners



Image courtesy Shore Transit



Other transportation provided



- ❖ Adult Day Services-buses transport clients to and from the Shady Pines Center; also on field trips, grocery shopping, etc.
- ❖ Head Start/Early Head Start-buses transport students 2 years of age and older to and from centers.

